

SECTION 01580 PROJECT IDENTIFICATION SIGN

PART 1 - GENERAL

1.01 REQUIREMENTS

- A. The Contractor shall furnish, install, and maintain all sign materials including sign posts, weighted stands, brackets, any required mounting hardware, and miscellaneous materials required for temporary project identification signs.
- B. See Construction Sign Detail on page 01580-4.
- C. See Construction Sign Layout on page 01580-5. Electronic file version is available on the Public Works website at: orlando.gov/projectidentificationsignage
- D. Remove project identification signs upon completion of construction.
- E. Allow no other signs to be displayed without written approval of the City.

1.02 SUBMITTALS

- A. Submit complete Shop Drawings identifying locations, material, layout, sign content, font type and size, and sample colors. Make sign and lettering to scale, clearly indicating condensed lettering if used. The sign details will be submitted to the City for approval prior to fabrication.
- B. Submit method of erection to include materials, fasteners, and other items to assure compliance with the requirements for wind pressures / speed as required by the authorities having jurisdiction.
- C. Submit signs in accordance with any details provided in the drawings as shown on standard detail drawing on page 01580-4 Construction Sign Detail and drawing on page 01580-5 Construction Sign Layout.

1.03 PROJECT IDENTIFICATION SIGN

- A. Provide one sign at the project site, or one at each end of the Project if it is a linear roadway project, or one at each location if the project includes separate work sites, as applicable. The sign will be not less than 32-square feet area, with a minimum dimension of 4-feet and painted graphics with content to include:
 - 1. Title of Project
 - 2. City of Orlando and logo.
 - 3. Names and titles of the City Government Officials.
- B. Erect the sign(s) on the site at a lighted location of high public visibility, adjacent to main entrance to site or project, as approved by the Engineer. The sign must be located 5-feet from the right-of-way and 20-feet from all property lines.

PART 2 - PRODUCTS

2.01 SIGN MATERIALS

- A. Structure and Framing: New construction grade lumber, structurally adequate and suitable for exterior application and specified finish.
- B. Sign Panels: New A-B Grade, exterior type, APA MDO plywood both sides.
 - 1. Thickness: As required by standards to span framing members, to provide even, smooth surface without waves or buckles, minimum 3/4-inch.
- C. Rough Hardware: Galvanized steel, of sizes and types to enable sign assemblies to resist wind loads as required by authorities having jurisdiction but not less than wind velocity of 50 mph.
 - 1. Use minimum 1/2-inch diameter button head carriage bolts to fasten sign panels to supporting structures or #10 x 2½" zinc wood screw spaced at 6" on center. Bolt heads to be painted to match sign face.
- D. Paint: Exterior quality, as specified in Division 9 or as a minimum as specified herein.
 - 1. Primer and finish coat: exterior, semi-gloss, enamel.
 - 2. Colors for structure, framing, sign surfaces, and graphics: As shown on the Drawings or as selected by the Engineer.

PART 3 - EXECUTION

3.01 PROJECT IDENTIFICATION SIGN

- A. Install project identification signs within 10-days of the Notice to Proceed date. Failure to erect the signs may be reason to delay approval of the initial Application for Payment.
- B. Paint exposed surfaces of supports, framing, and surface material; one (1) coat of primer and two (2) coats of finish paint.
- C. Set signs plumb and level and solidly brace as required to prevent displacement during the Construction period. If mounted on posts, sink posts 3-feet to 4-feet below grade, leaving a minimum of 8-feet of each post above grade for mounting the sign.
- D. Install informational signs at a height for optimum visibility, on ground mounted poles or attached to temporary structural surfaces.

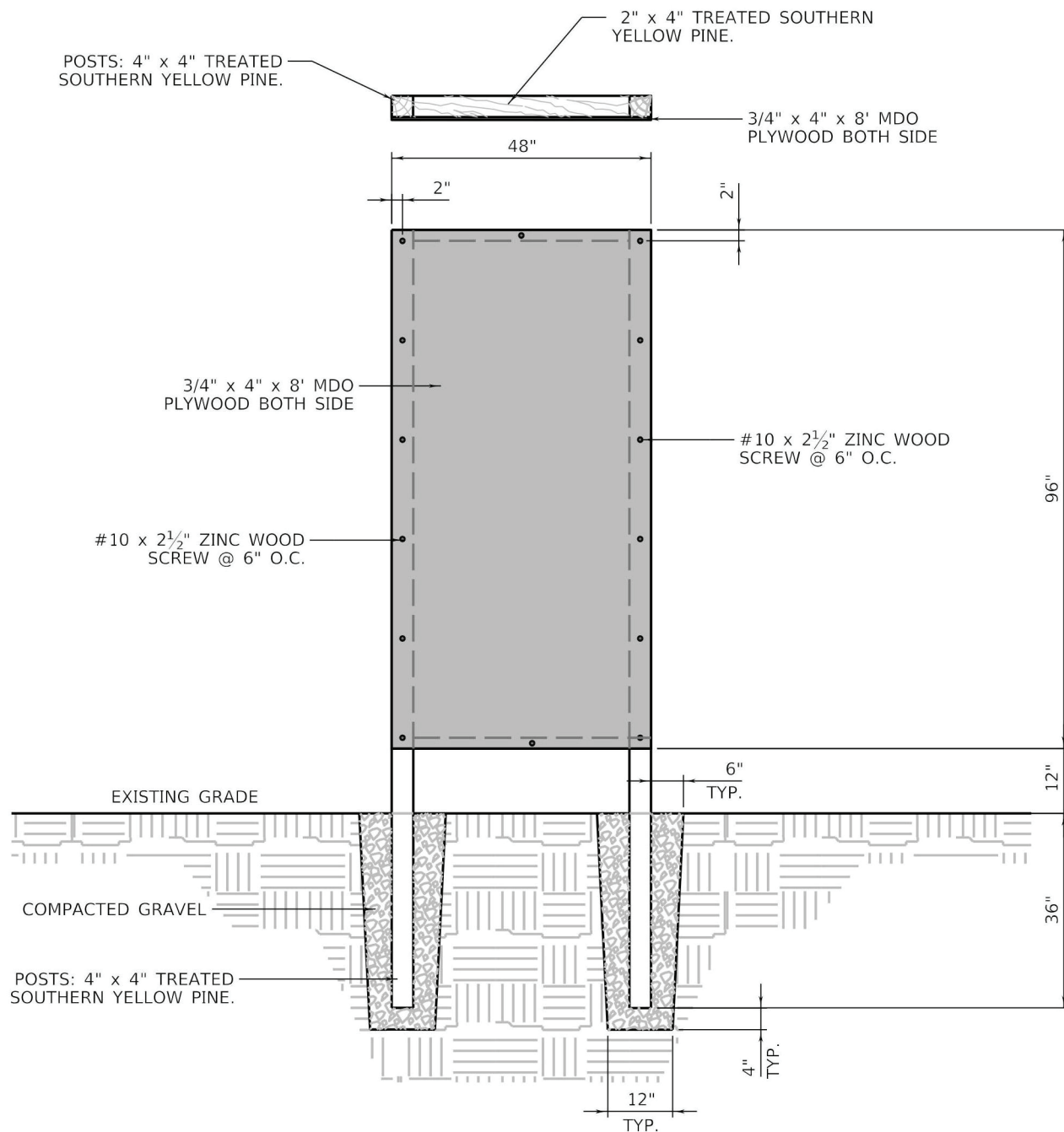
3.02 MAINTENANCE

- A. Maintain signs and supports in a neat, clean condition; repair damages to structure, framing, or sign.
- B. Relocate informational signs as required by the progress of the Work.

- C. Poorly maintained, defaced, damaged, or dirty signs shall be replaced, repaired, or cleaned without delay, at no additional cost to the City.
- D. Special care must be taken to ensure that construction materials and dust are not allowed to obscure the face of a sign.
- E. Signs not in effect shall be covered or removed.

3.03 REMOVAL

- A. Remove signs, framing, supports, and foundations at Completion of the Work.
- B. Leave areas clean and patch as required to remove any traces of temporary signs.

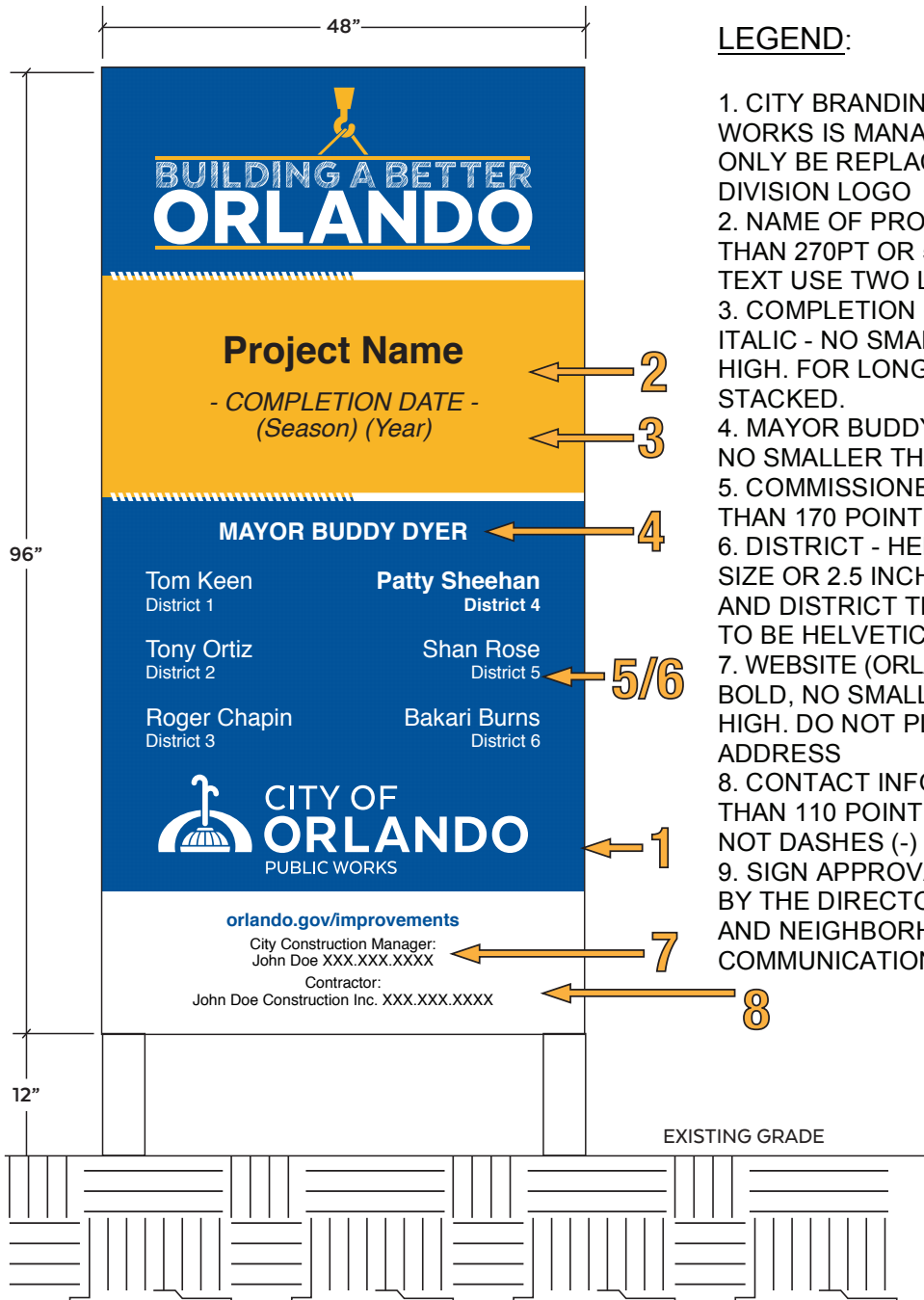


NOTES:

1. SIGN BOARD IS 3/4" x 4' x 8' NEW CONSTRUCTION MATERIALS, EXTERIOR GRADE PLYWOOD MDO BOTH SIDES
2. POST: 4" x 4" TREATED SOUTHERN YELLOW PINE.
3. LOCATION OF SIGN TO BE DETERMINED BY PROJECT REPRESENTATIVE.
4. USE CARRIAGE BOLTS 3/8" x 8" WITH WASHERS, ALL PIECES TO BE GALVANIZED FOR FRAME AND BRACES.

PROJECT CONSTRUCTION SIGN DETAIL

PROJECT CONSTRUCTION SIGN LAYOUT **WITHOUT RENDERING**



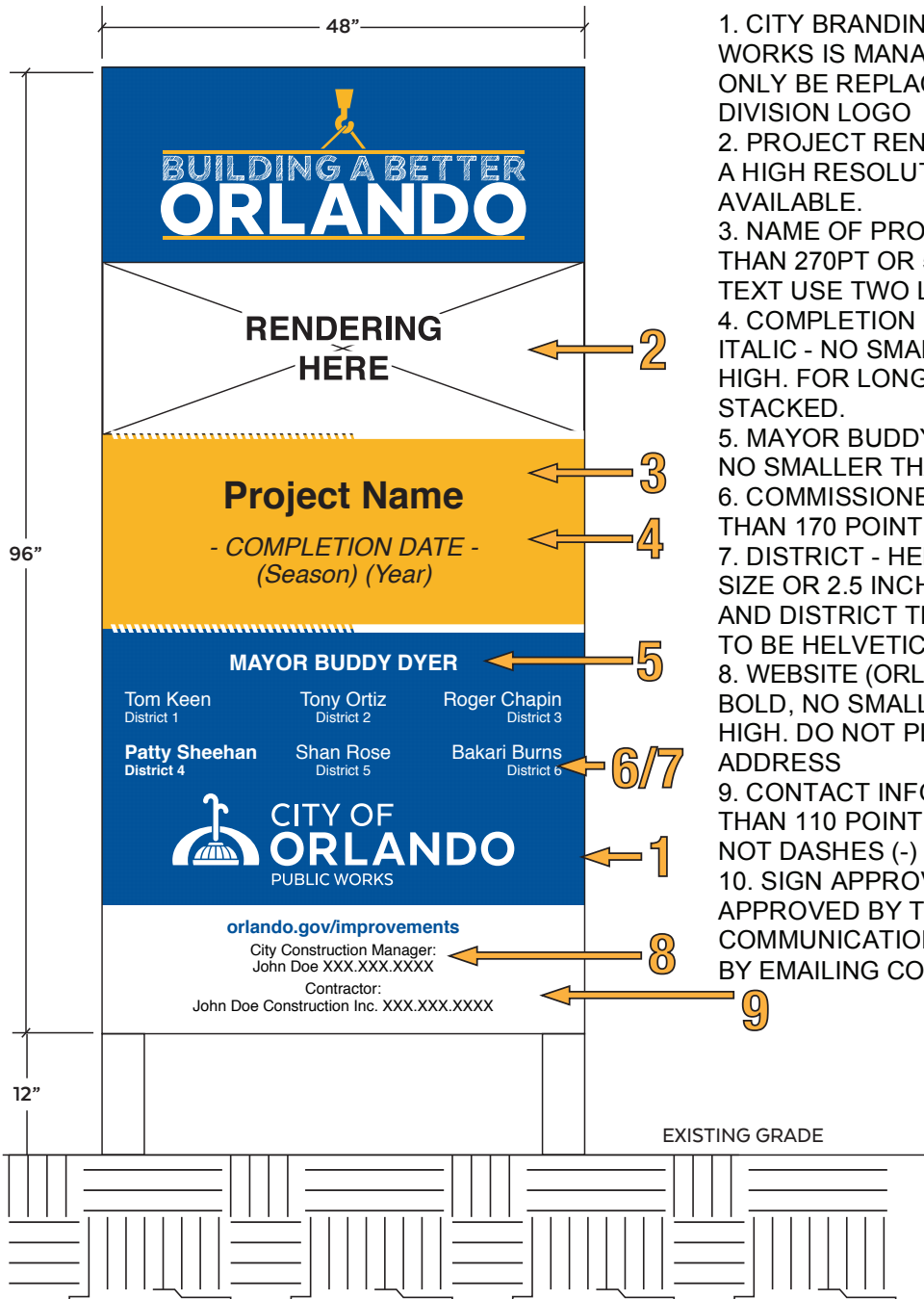
LEGEND:

1. CITY BRANDING – IF A DIVISION OTHER THAN PUBLIC WORKS IS MANAGING THE PROJECT, THE LOGO MAY ONLY BE REPLACED BY AN OFFICIAL CITY OF ORLANDO DIVISION LOGO
2. NAME OF PROJECT - HELVETICA BOLD - NO SMALLER THAN 270PT OR 5 INCHES HIGH. FOR LONGER LINES OF TEXT USE TWO LINES STACKED
3. COMPLETION DATE (SEASON/YEAR) - HELVETICA ITALIC - NO SMALLER THAN 180PT OR 3.75 INCHES HIGH. FOR LONGER LINES OF TEXT USE TWO LINES STACKED.
4. MAYOR BUDDY DYER - HELVETICA BOLD, ALL CAPS, NO SMALLER THAN 170 POINT SIZE OR 2.5 INCHES HIGH
5. COMMISSIONER NAME - HELVETICA, NO SMALLER THAN 170 POINT SIZE OR 3 INCHES HIGH
6. DISTRICT - HELVETICA, NO SMALLER THAN 125 POINT SIZE OR 2.5 INCHES HIGH NOTE: THE COMMISSIONER AND DISTRICT THAT THE PROJECT IS BUILT IN NEEDS TO BE HELVETICA BOLD
7. WEBSITE (ORLANDO.GOV/IMPROVEMENTS) HELVETICA BOLD, NO SMALLER THAN 110 POINT SIZE OR 2 INCHES HIGH. DO NOT PLACE A "WWW" IN FRONT OF WEB ADDRESS
8. CONTACT INFORMATION - HELVETICA, NO SMALLER THAN 110 POINT SIZE OR 2 INCHES HIGH. USE DOTS (.) NOT DASHES (-) IN PHONE NUMBER
9. SIGN APPROVAL - ALL SIGNAGE MUST BE APPROVED BY THE DIRECTOR OF OFFICE OF COMMUNICATIONS AND NEIGHBORHOOD RELATIONS BY EMAILING COMMUNICATIONS@ORLANDO.GOV.

PROJECT CONSTRUCTION SIGN LAYOUT **WITH RENDERING**

LEGEND:

1. CITY BRANDING – IF A DIVISION OTHER THAN PUBLIC WORKS IS MANAGING THE PROJECT, THE LOGO MAY ONLY BE REPLACED BY AN OFFICIAL CITY OF ORLANDO DIVISION LOGO
2. PROJECT RENDERING- THIS IS ONLY ACCEPTABLE IF A HIGH RESOLUTION PROJECT RENDERING IS AVAILABLE.
3. NAME OF PROJECT - HELVETICA BOLD - NO SMALLER THAN 270PT OR 5 INCHES HIGH. FOR LONGER LINES OF TEXT USE TWO LINES STACKED
4. COMPLETION DATE (SEASON/YEAR) - HELVETICA ITALIC - NO SMALLER THAN 180PT OR 3.75 INCHES HIGH. FOR LONGER LINES OF TEXT USE TWO LINES STACKED.
5. MAYOR BUDDY DYER - HELVETICA BOLD, ALL CAPS, NO SMALLER THAN 170 POINT SIZE OR 2.5 INCHES HIGH
6. COMMISSIONER NAME - HELVETICA, NO SMALLER THAN 170 POINT SIZE OR 3 INCHES HIGH
7. DISTRICT - HELVETICA, NO SMALLER THAN 125 POINT SIZE OR 2.5 INCHES HIGH NOTE: THE COMMISSIONER AND DISTRICT THAT THE PROJECT IS BUILT IN NEEDS TO BE HELVETICA BOLD
8. WEBSITE (ORLANDO.GOV/IMPROVEMENTS) HELVETICA BOLD, NO SMALLER THAN 110 POINT SIZE OR 2 INCHES HIGH. DO NOT PLACE A “WWW” IN FRONT OF WEB ADDRESS
9. CONTACT INFORMATION - HELVETICA, NO SMALLER THAN 110 POINT SIZE OR 2 INCHES HIGH. USE DOTS (.) NOT DASHES (-) IN PHONE NUMBER
10. SIGN APPROVAL - ALL SIGNAGE MUST BE APPROVED BY THE DIRECTOR OF OFFICE OF COMMUNICATIONS AND NEIGHBORHOOD RELATIONS BY EMAILING COMMUNICATIONS@ORLANDO.GOV.



END OF SECTION