

An aerial photograph of the Rollins College campus, featuring a large white church with a steeple, surrounded by green lawns and trees. In the background, a large lake (Lake Wales) is visible, with a city skyline on the far shore under a clear blue sky.

Crummer

Graduate School of Business
Rollins College

Experience Excellence

LOCAL GOOD, MULTIPLIED.

Min Sun Kim & Andrew Smith
Edyth Bush Institute for Philanthropy & Nonprofit Leadership

The Edyth Bush Institute for Philanthropy & Nonprofit Leadership workshop materials are copyrighted under the following Creative Commons copyright license:



This work is licensed under a Creative Commons Attribution-NonCommercial-NoDerivatives 4.0 International License.

If you have questions about use of the materials provided in workshops and certificate programs, please contact the Edyth Bush Institute office at 407.975-6414 or e-mail ebi@rollins.edu.



Crummer | Rollins
EDYTH BUSH INSTITUTE
FOR PHILANTHROPY & NONPROFIT LEADERSHIP

MISSION:

To strengthen the impact, effectiveness and leadership of nonprofit and philanthropic organizations through education and management assistance.

When you think of what it might take to be a community where everyone thrives, what needs to change?



THRIVING
CITIES



Who do you think has the most potential for solving big community-wide problems?



- A. Government?
- B. Schools?
- C. Large Businesses?
- D. Small Businesses?
- E. Nonprofits?
- F. Philanthropists?
- G. Neighborhood?
- H. You

Who do you think has the most potential for solving big community-wide problems?



- A. Government?
- B. Schools?
- C. Large businesses?
- D. Small businesses?
- E. Nonprofits?
- F. Philanthropists?
- G. Neighborhood?
- H. You

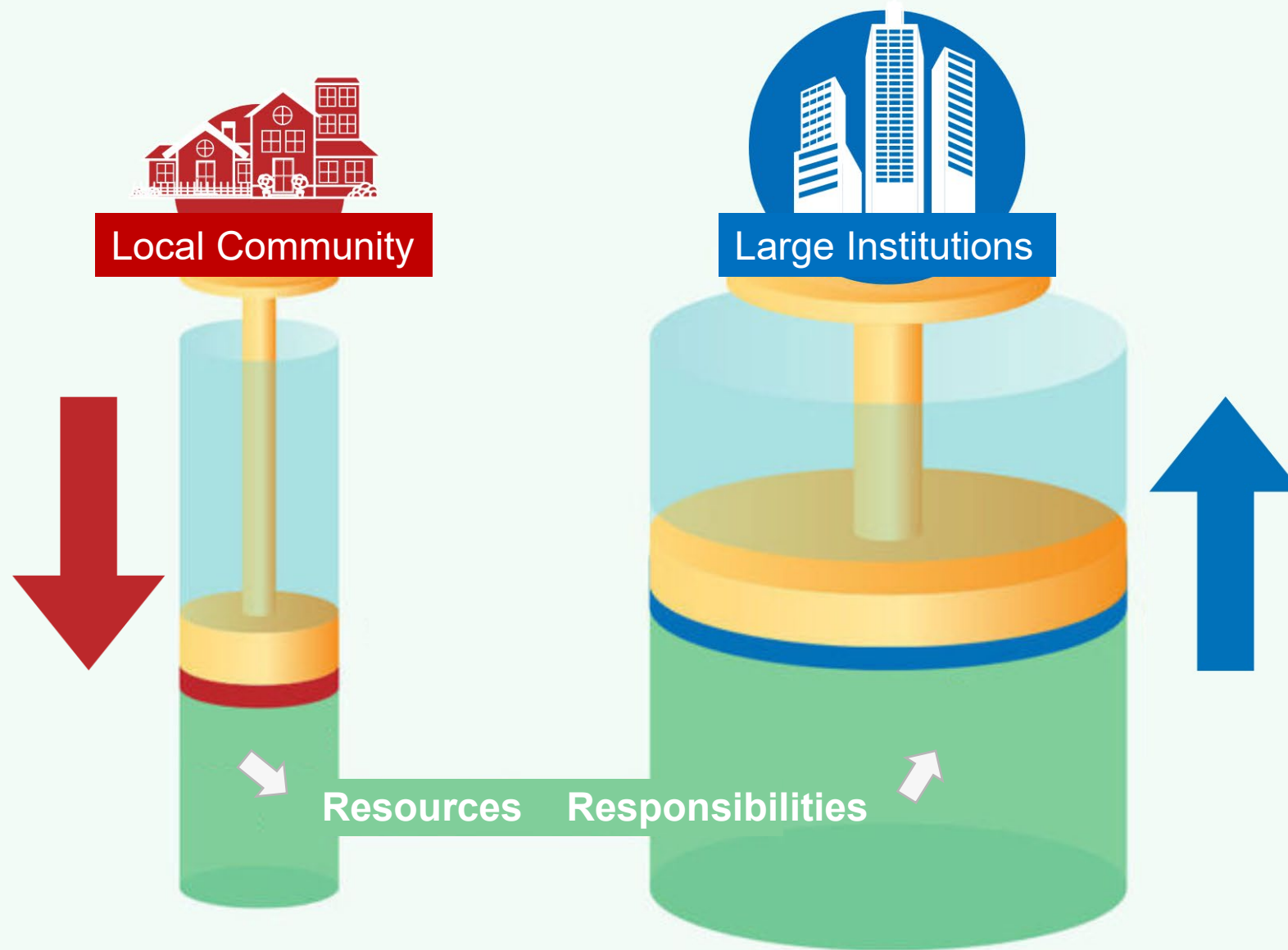
Yes!

Who do you think has the most potential for solving big community-wide problems?



- A. Government?
- B. Schools?
- C. Large Businesses?
- D. Small Businesses?
- E. Nonprofits?
- F. Philanthropists?
- G. Neighborhood?
- H. You





Adapted from Cormac Russell, *Nurture Development*

Think big!



And remember that prototypes are good too.

Individuals

**Local
Community
Groups**

Institutions



Individuals

**Local
Community
Groups**

Institutions



Individuals

**Local
Community
Groups**

Institutions

AN EQUATION FOR GOOD

YOU

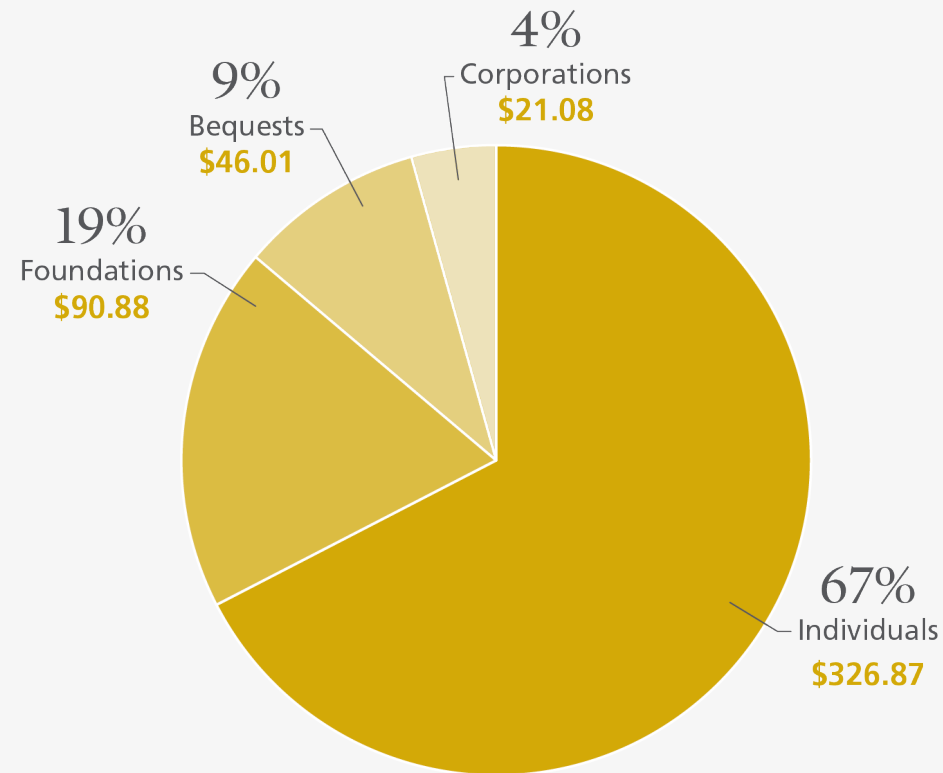
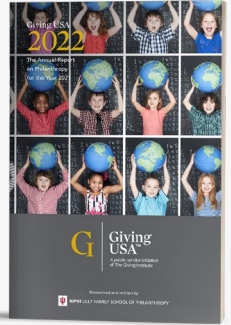
+ LOCAL COMMUNITY

+ INSTITUTIONS

THRIVING COMMUNITY

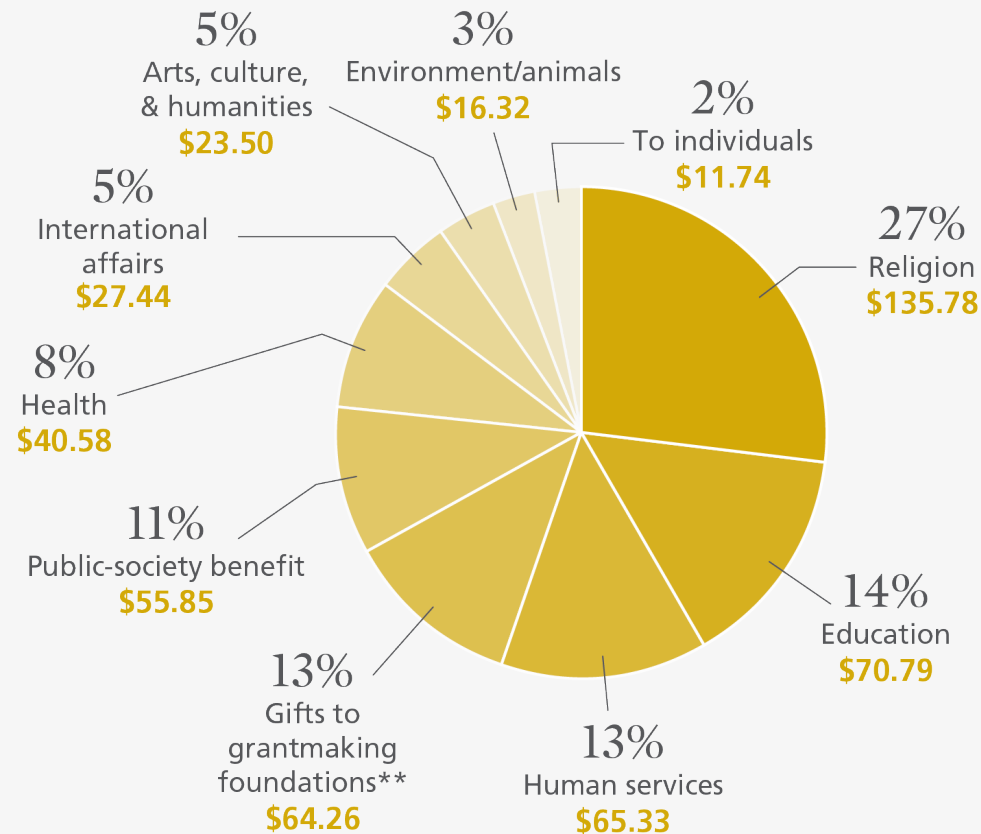
2021 contributions: \$484.85 billion by source of contributions

(in billions for dollars – all figures are rounded)



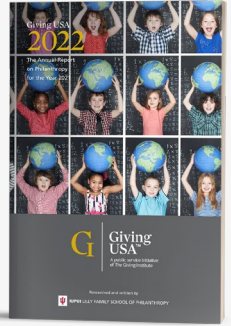
2021 contributions: \$484.85 billion by type of recipient organization*

(in billions for dollars – all figures are rounded)



* Total includes unallocated giving, which totaled -\$26.75 billion in 2021.

** Estimates developed by the Indiana University Lilly Family School of Philanthropy using data provided by Candid.





Stanford PACS

Center on Philanthropy
and Civil Society

—
Digital Civil Society Lab

How We Give Now: **Conversations Across the United States**



Research Conducted for The Generosity Commission

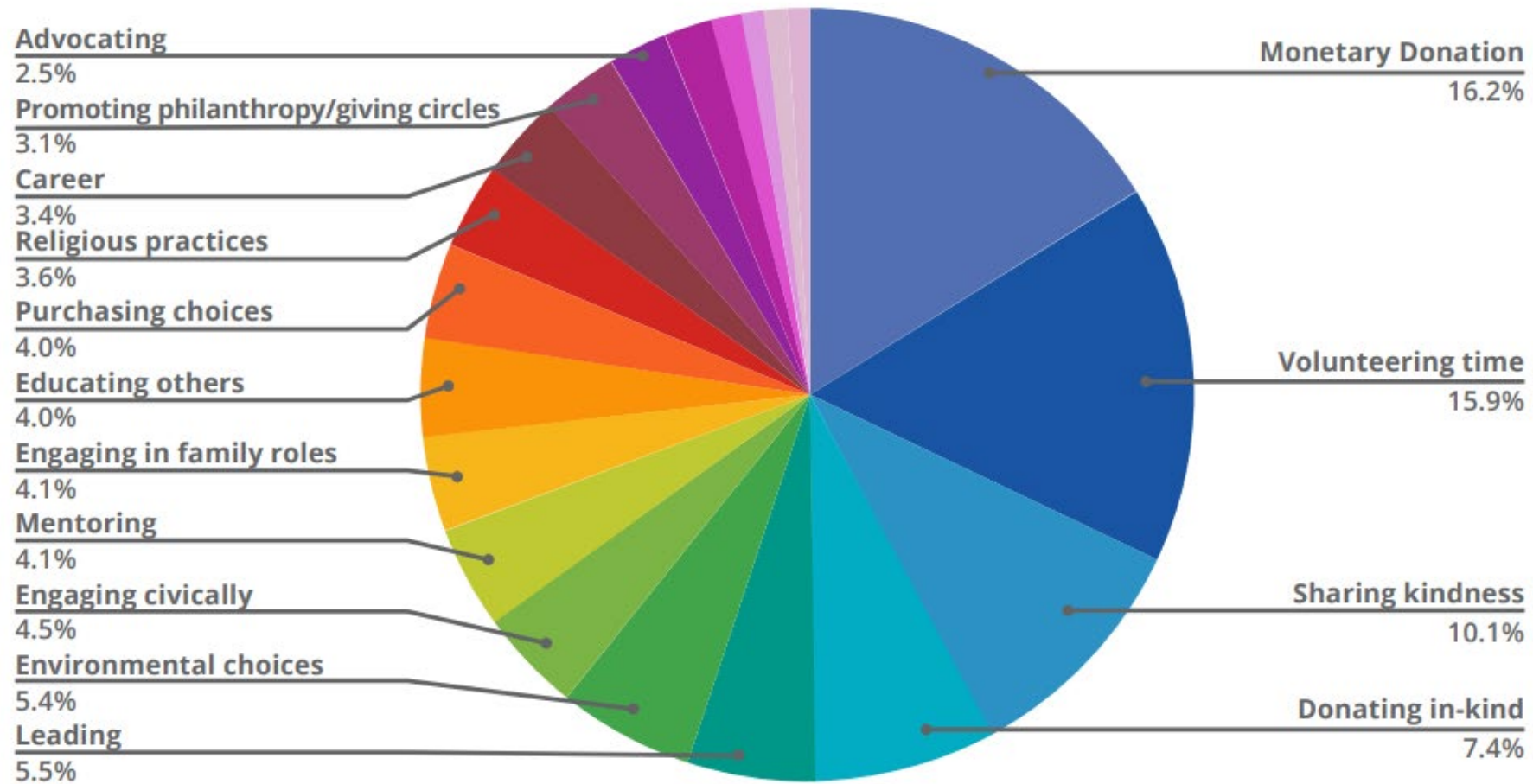
*“How Do I Give to
Make the World a
Better Place?”*



Stanford PACS

Center on Philanthropy
and Civil Society

Digital Civil Society Lab





Good at Every Level!

- **Step 1:** What's one big challenge facing our community that you want to tackle?
- **Step 2:** What will you do to address that problem?
(Come up with one activity or program.)
- **Step 3:** Who could you partner with to make a bigger difference? (from another structural level)
What would be the impact of working together?





Equipping local nonprofits with the tools to succeed in the post-pandemic environment.

Presented by:



Empowering-Good.org



<https://youtu.be/fKGNchU6liQ>



Individuals

**Local
Community
Groups**

Institutions

Individuals

**Local
Community
Groups**

Institutions

Passion Project

**Startup
Nonprofit**

Established Nonprofit

**Regional
Nonprofit**

Desirable
Viable
Feasible

Local good is diverse.

**What is the full
scope of impact?**

AN EQUATION FOR GOOD

YOU

+ LOCAL COMMUNITY

+ INSTITUTIONS

THRIVING COMMUNITY

Title of Today's Workshop

Local Good, *Multiplied.*

AN EQUATION FOR GOOD

YOU

x LOCAL COMMUNITY

x INSTITUTIONS

THRIVING COMMUNITY

AN EQUATION FOR GOOD

YOU + LOCAL COMMUNITY + INSTITUTIONS = THRIVING COMMUNITY

YOU X LOCAL COMMUNITY X INSTITUTIONS = THRIVING COMMUNITY

An aerial photograph of the Rollins College campus, showing a large white church with a steeple, surrounded by green lawns and trees. In the background, a large lake (Lake Wales) is visible, with a city skyline on the far shore under a blue sky with light clouds.

Crummer

Graduate School of Business
Rollins College

Experience Excellence

THANK YOU

Min Sun Kim (mkim@rollins.edu)
Andrew Smith (absmith@rollins.edu)