



VIRGINIA / LAKE HIGHLAND
TRANSPORTATION AND LAND USE STUDY



PRESENTATION OVERVIEW

1 PLANNING PROCESS

2 TRANSPORTATION CHARACTERISTICS

3 URBAN DESIGN FRAMEWORK

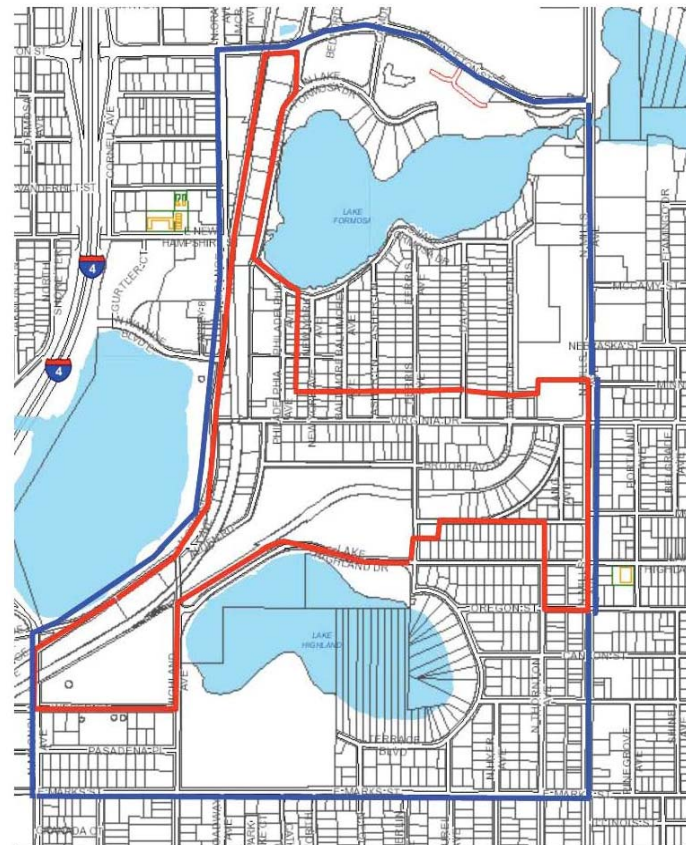
4 NEXT STEPS

1

PLANNING PROCESS

Project organization and timeline

STUDY AREA



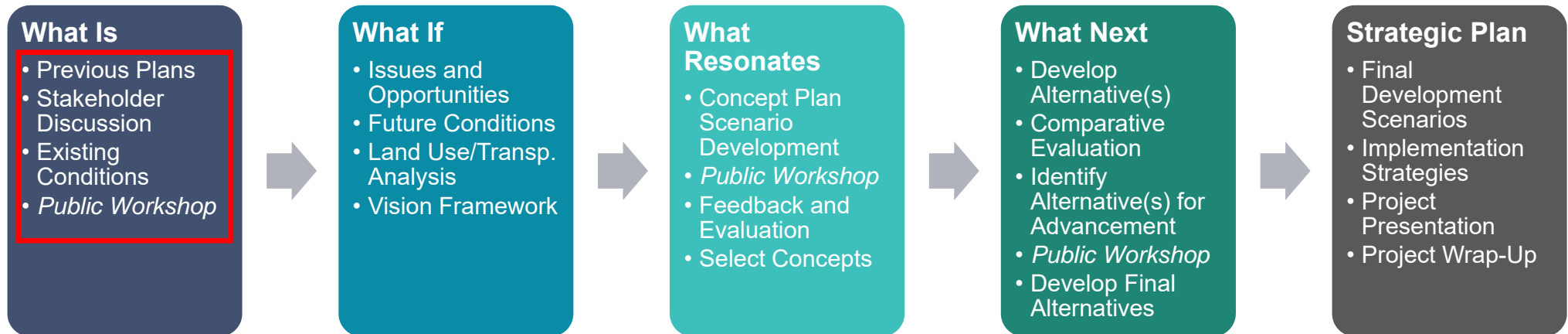
Blue boundaries show transportation study area.
Red boundaries show land use study area.

PROJECT GOALS

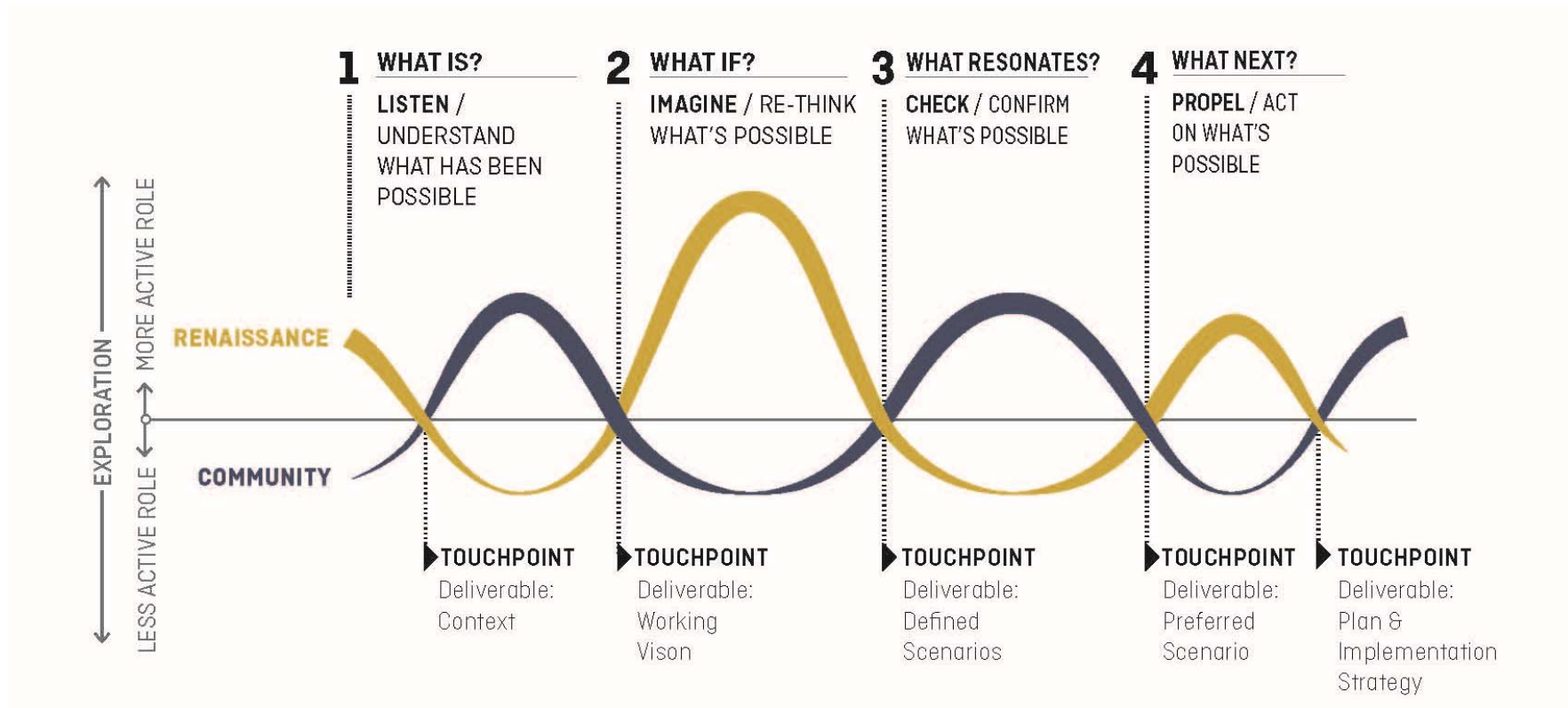
The City wished to develop a transportation infrastructure plan and land use plan for the neighborhoods surrounding the Virginia Drive corridor, including the Lake Formosa and Park Lake/Highland neighborhoods.

This study will look at land use and projected development against an examination of travel patterns to develop a multimodal transportation network design that supports the City's vision of sustainability, mobility options, and a safe community that meets the needs of residents, businesses, and visitors.

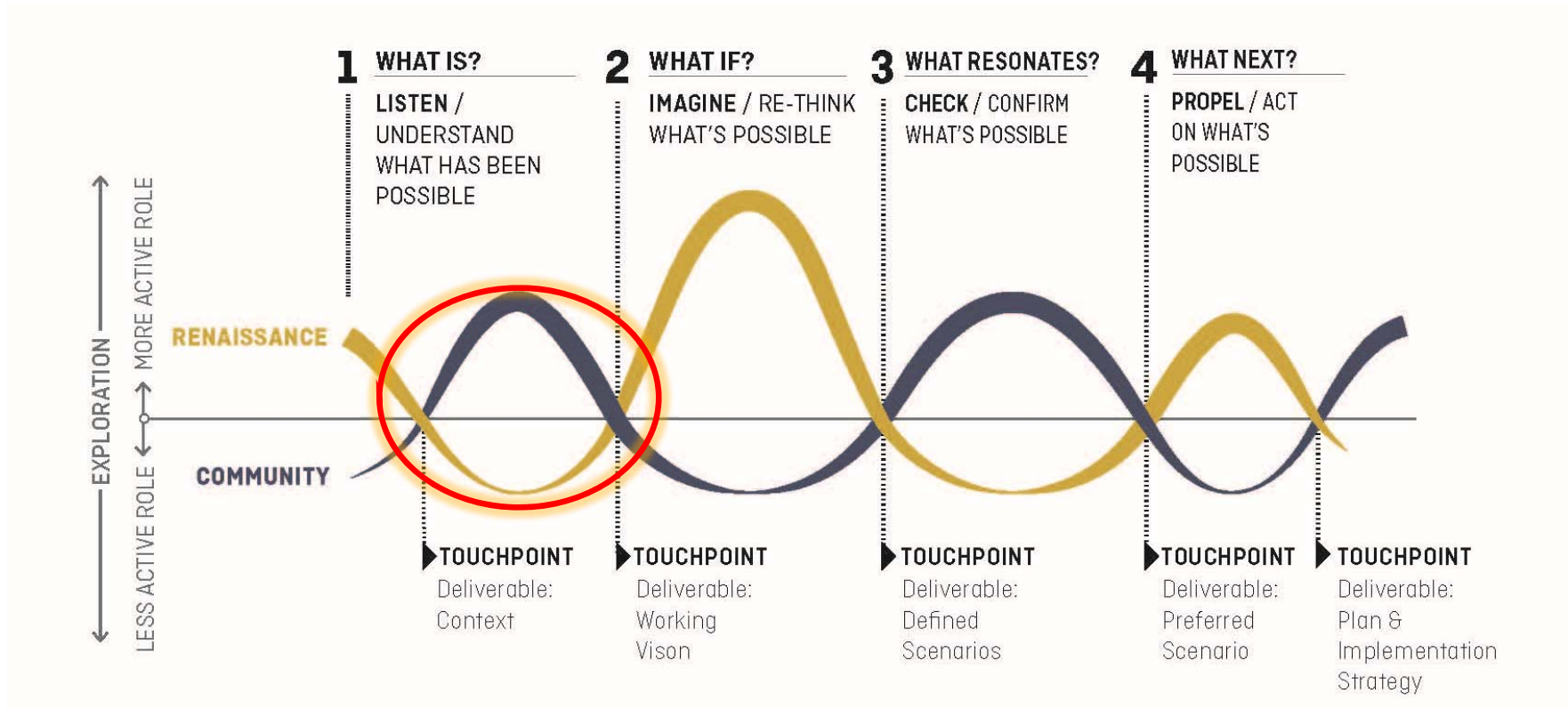
PLANNING PROCESS



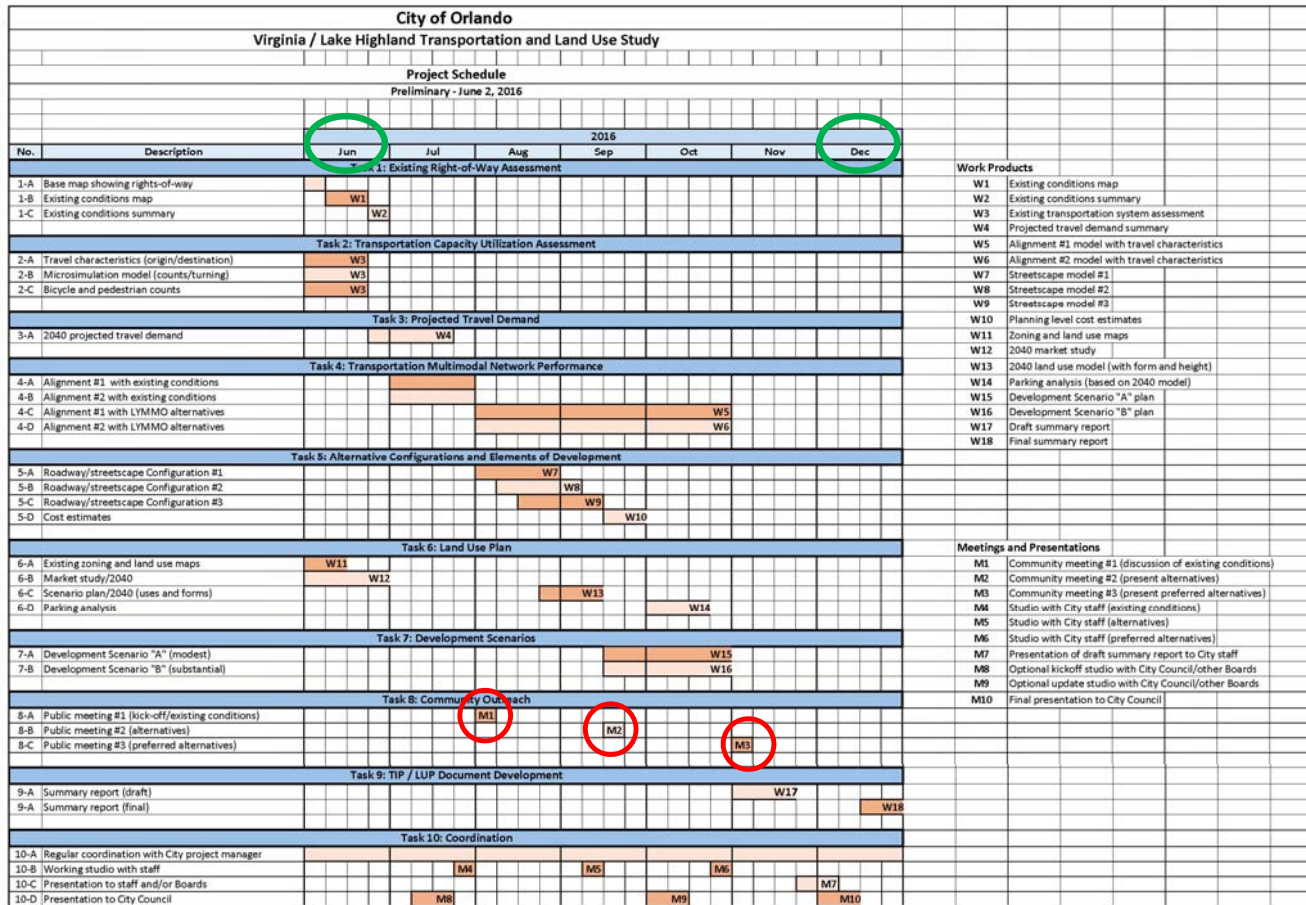
WORK FLOW AND TOUCHPOINTS



WORK FLOW AND TOUCHPOINTS



TIMELINE



2

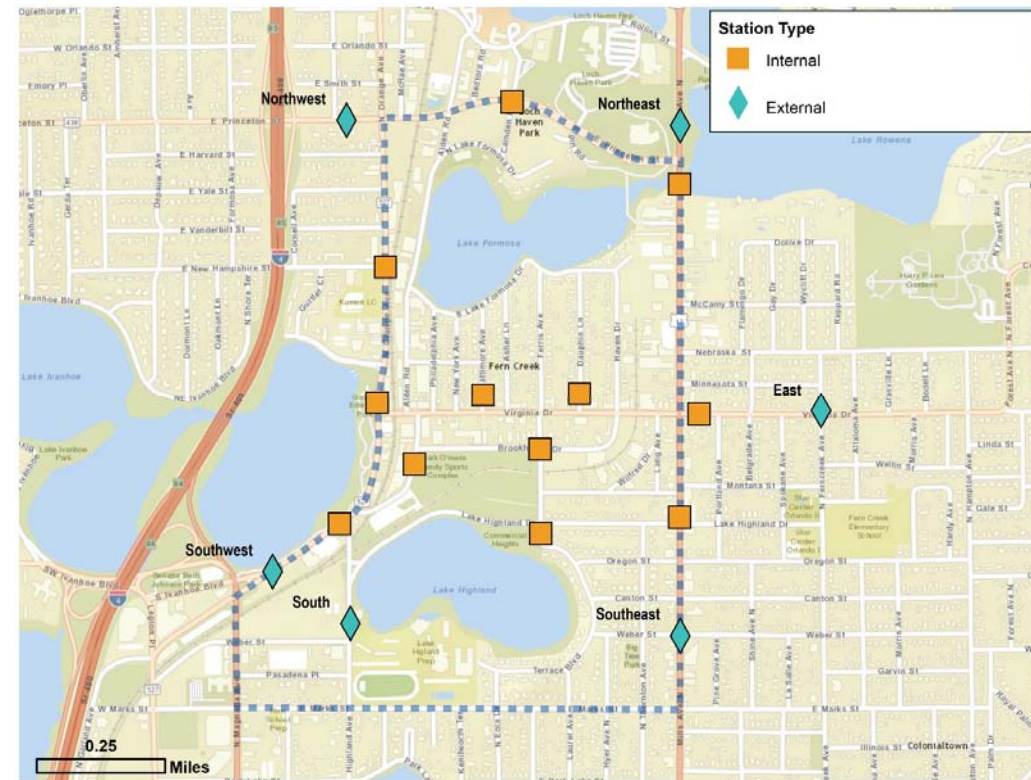
TRANSPORTATION CHARACTERISTICS

Roadway, traffic, and safety conditions

TRAFFIC CONDITIONS

Origin and destination summary

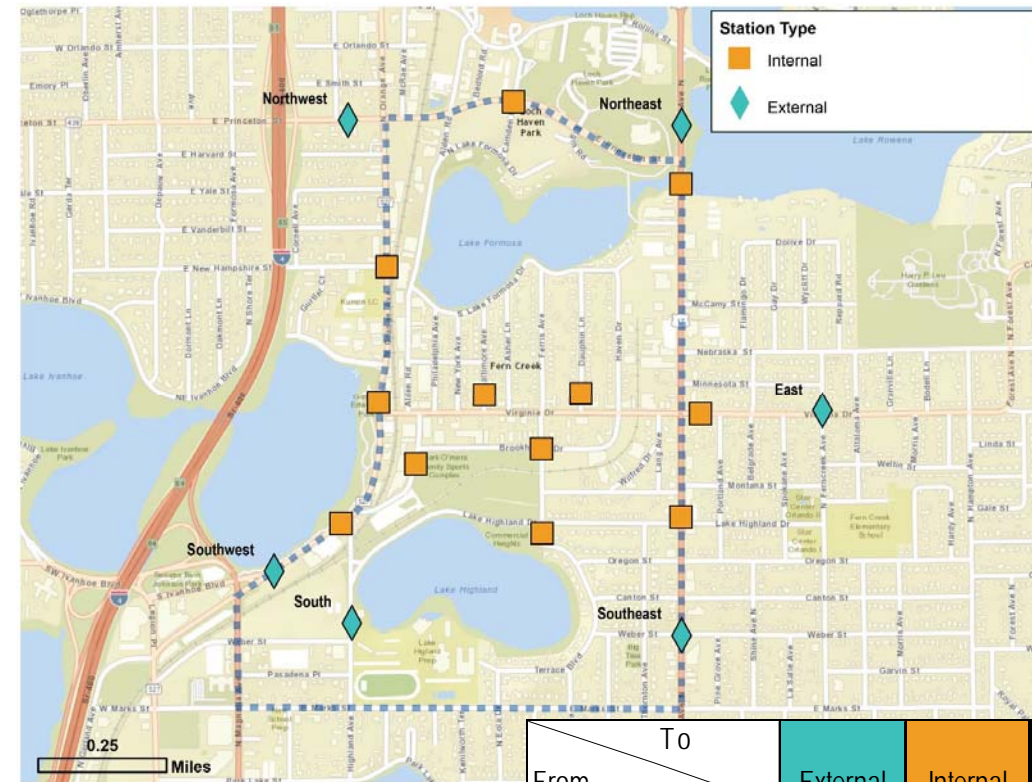
- Data summarized into External and Internal origin and destinations
- External to External = regional cut through trips
- External to Internal or Internal to External = to/from study area
- Internal to Internal = local trips that stay within the study area
- Multiple time periods analyzed



TRAVEL CHARACTERISTICS

Travel characteristics of the study area include:

- 36 - 40% regional cut through
- 22- 25% each to / from study area
- 13 - 16% local trips that stay within the study area
- 39 - 56% from Southwest to Northwest (Orange Avenue)
- 41 - 48% from Southeast to Northwest (Mills Avenue)
- From East evenly distributed to external stations; 26 - 33% have destinations in study area



		To	
		External	Internal
From	External	40%	22%
	Internal	24%	14%

3

URBAN DESIGN FRAMEWORK

Land use planning

EXISTING CONDITIONS AND INVENTORY

We have been working to establish the context that will serve as a foundation for upcoming planning tasks. We have been looking at existing conditions such as:

- Previous planning efforts, such as Neighborhood Horizon Strategies for Park Lake/Highland and Lake Formosa neighborhoods, and the Urban Design Plan
- Policy - zoning and future land use
- Land uses
- Streetscape network
- Infrastructure network
- Transportation network



4

NEXT STEPS

Continuing touchpoints with the community

UPCOMING WORK EFFORTS

After this meeting, our work efforts will involve the following activities:

- Issues and opportunities summary
- Vision statement and working vision map
- 2040 projected travel demand
- Market study
- Parking analysis
- Multimodal network performance/alternative alignments
- Roadway/streetscape alternatives
- Development concepts/scenarios
- Public workshop #2 (mid September)



TONIGHT'S EXERCISE

- Markup maps – tell us areas of concern, areas of opportunity, special places...anything you want us to know about and consider as we move forward into design.
- Give us comments – we have flip charts and post-it notes available for any information you would like to convey to us.
- Map groupings
 - Traffic maps: transportation discussion
 - Zoning/FLU maps: land use and market discussion
 - Inventory maps: urban planning discussion
- Have fun and be creative – all input is good and all participation is welcome and encouraged.



PROJECT CONTACTS

Elisabeth Dang – City Project Manager

City of Orlando

400 S. Orange Avenue, Orlando, FL 32801

(407) 246-3408

Email: Elisabeth.dang@cityoforlando.net



David Nelson – Consultant Project Manager

Renaissance Planning

121 S. Orange Avenue, Orlando FL 32801

(407) 487-0061 x129

Email: dnelson@ciesthatwork.com





VIRGINIA / LAKE HIGHLAND TRANSPORTATION AND LAND USE STUDY

