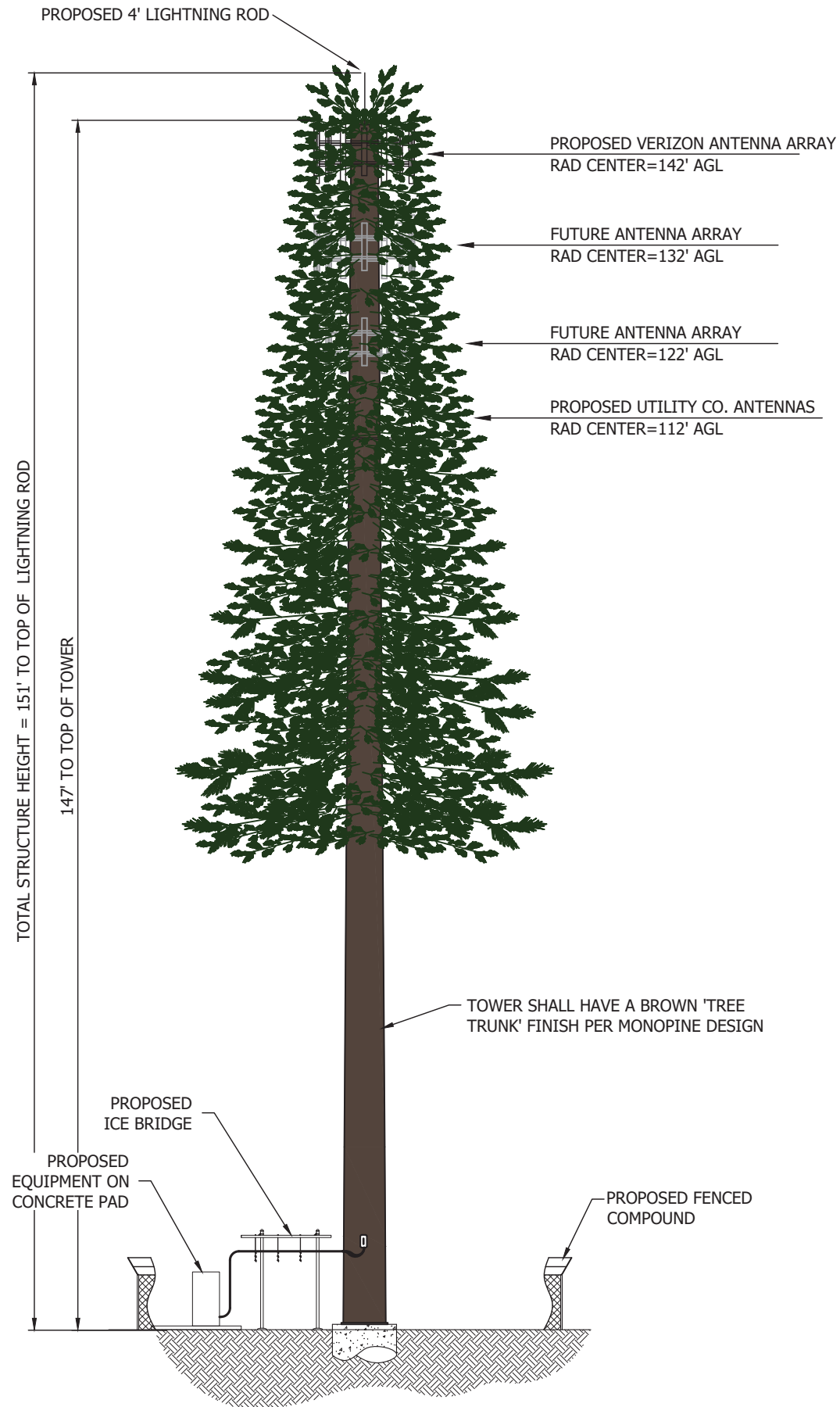


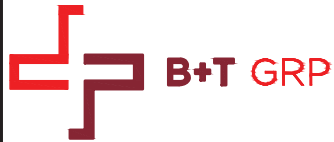
S:\PROJECTS\LIN DAS, LLC\165625_TOWER 5\CAD\CIVIL\2D\165625_LAKE NONA POTRAS-TOWER 5_ZDYS (0).DWG - 2023-07-19 - mspeedie



STRUCTURAL ANALYSIS NOTES:
1. ANTENNA PLACEMENT WAS DETERMINED WITHOUT VERIFICATION OF STRUCTURAL ANALYSIS.
2. REFER TO STRUCTURAL ANALYSIS OR STRUCTURAL LETTER FOR APPROVAL OF ADDITIONAL NEW APPURTENANCES.

1 MONOPINE TOWER PROFILE
SCALE: N.T.S.

NOTES: CONTRACTOR TO REFER TO THE STRUCTURAL DESIGN REPORT PRIOR TO CONSTRUCTION.



DAIS TOWER
TOWER 5
LAKE NONA
POTRAS
BOGGY CREEK ROAD
ORLANDO, FL 32827
ORANGE COUNTY
TAX PARCEL 31-24-31-7793-15-001
PROPOSED 147' MONOPINE

PROJECT NO: G165625.001.01

CHECKED BY: DLS

ISSUED FOR:			
REV	DATE	DRWN	DESCRIPTION
B	4/28/23	BCT	PRELIMINARY DRAWINGS
C	4/28/23	MAS	PRELIMINARY DRAWINGS
O	4/28/23	MAS	SUBMITTAL

B&T ENGINEERING, INC.

CHAD E. TUTTLE

LICENSE

No. 57199

STATE OF FLORIDA

PROFESSIONAL ENGINEER

IT IS A VIOLATION OF LAW FOR ANY PERSON, UNLESS THEY ARE ACTING UNDER THE DIRECTION OF A LICENSED PROFESSIONAL ENGINEER, TO ALTER THIS DOCUMENT.

TOWER
PROFILE

SHEET NUMBER:
C-3