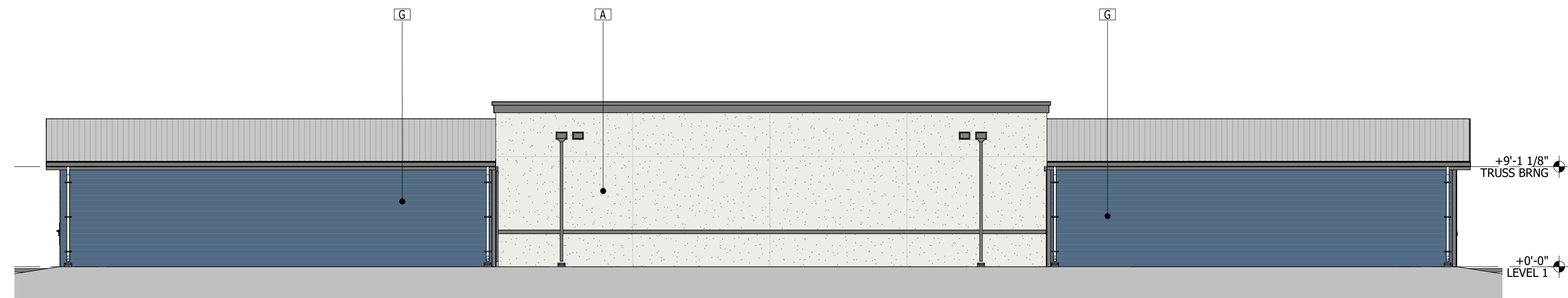
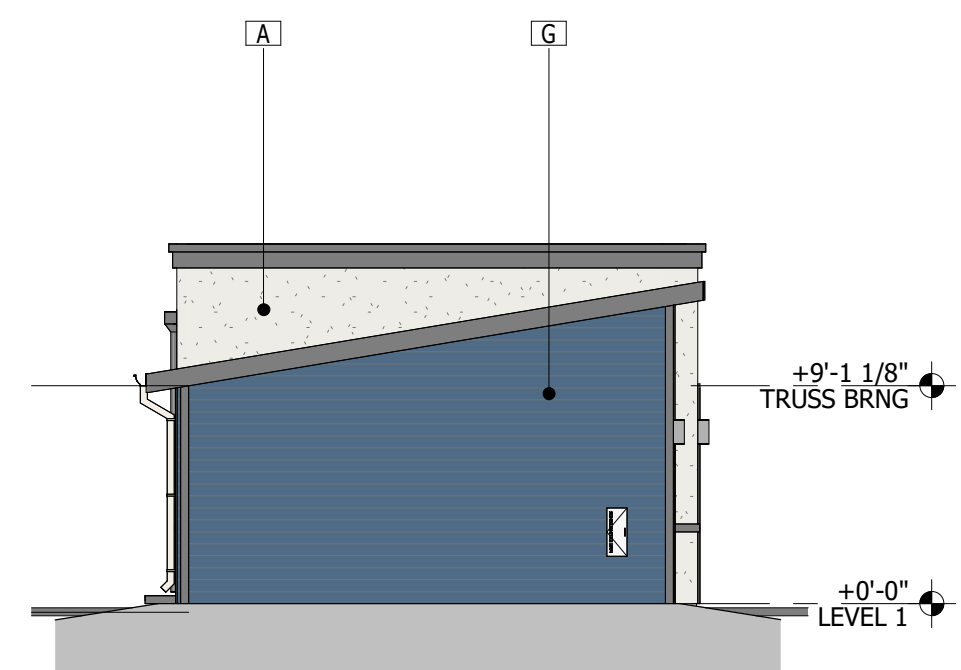


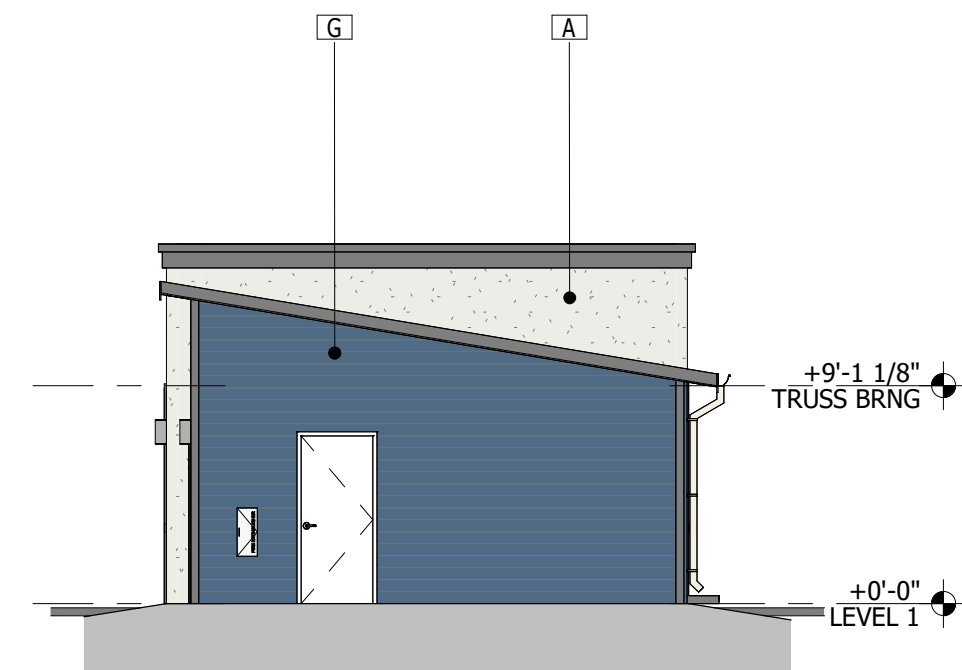
Written dimensions on these drawings shall have precedence over scaled dimensions. Contractor shall verify and be responsible for all dimensions and conditions on the job. Scott + Cormia Architecture and Interiors, LLC. must be notified immediately in writing of any variation from the dimensions and conditions shown on these drawings. Field verify all conditions prior to laying out or fabricating associated work. Bring to the architect's attention any deviation from designed conditions and field conditions prior to ordering materials and installing work, and cooperate with architect to modify such conditions at no additional cost to the owner, architect or architect's consultants. Shop details must be submitted to the architect's office and reviewed by the architect prior to ordering materials, fabrication and delivery to the job site. The contractor agrees to indemnify, defend and hold the architect and Scott + Cormia Architecture and Interiors, LLC. harmless and agree to remunerate Scott + Cormia Architecture and Interiors, LLC. for such use in an amount equal to the original fee for the original documents, plus legal fees, court costs, collection fees and other costs. Scott + Cormia Architecture and Interiors, LLC. reserves its common law copyright and other property rights in these drawings and shall hold Scott + Cormia Architecture and Interiors, LLC. harmless and agree to remunerate Scott + Cormia Architecture and Interiors, LLC. for such use in an amount equal to the original fee for the original documents, plus legal fees, court costs, collection fees and other costs. 7/25/2022 11:33:37 AM



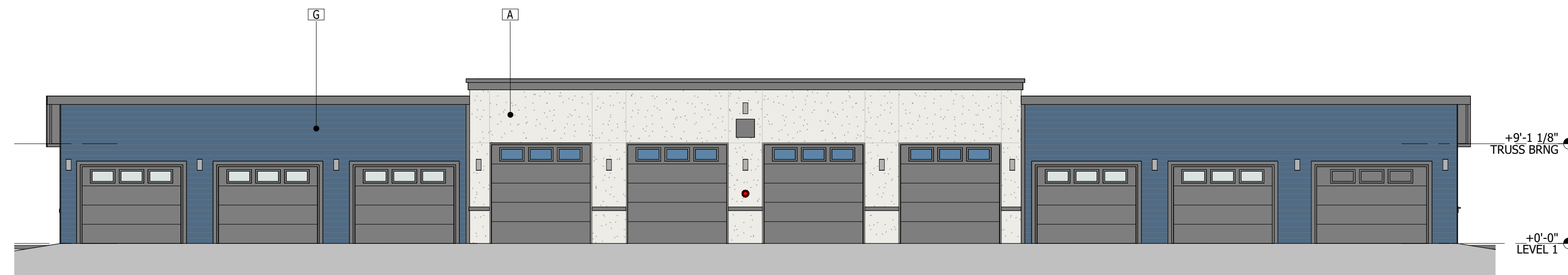
**4** 10-CAR GARAGE W/ACC - REAR ELEVATION  
SCALE: 1/8" = 1'-0"



**2** 10-CAR GARAGE W/ACC - LEFT ELEVATION  
SCALE: 1/8" = 1'-0"



**3** 10-CAR GARAGE W/ACC - RIGHT ELEVATION  
SCALE: 1/8" = 1'-0"



**1** 10-CAR GARAGE W/ACC - FRONT ELEVATION  
SCALE: 1/8" = 1'-0"

FINISH LEGEND		
A		<b>MATERIAL:</b> STUCCO SYSTEM SMOOTH FINISH <b>COLOR:</b> SHERWIN WILLIAMS PURE WHITE (SW7005)
B		<b>MATERIAL:</b> STUCCO SYSTEM SMOOTH FINISH <b>COLOR:</b> SHERWIN WILLIAMS DENIM (SW6523)
C		<b>MATERIAL:</b> STUCCO SYSTEM SMOOTH FINISH <b>COLOR:</b> SHERWIN WILLIAMS LET IT RAIN (SW9152)
D		<b>MATERIAL:</b> FIBER CEMENT FLAT PANEL & TRIM <b>COLOR:</b> SHERWIN WILLIAMS PURE WHITE (SW7005)
E		<b>MATERIAL:</b> FIBER CEMENT FLAT PANEL & TRIM <b>COLOR:</b> SHERWIN WILLIAMS LET IT RAIN (SW9152)
F		<b>MATERIAL:</b> FIBER CEMENT LAP SIDING 7" EXPOSURE <b>COLOR:</b> SHERWIN WILLIAMS LET IT RAIN (SW9152)
G		<b>MATERIAL:</b> FIBER CEMENT LAP SIDING 7" EXPOSURE <b>COLOR:</b> SHERWIN WILLIAMS DENIM (SW6523)
H		<b>MATERIAL:</b> FIBER CEMENT LAP SIDING 7" EXPOSURE <b>COLOR:</b> SHERWIN WILLIAMS DUTCH TILE BLUE (SW0031)
I		<b>MATERIAL:</b> STONE VENEER - PROVIA PRECISION FIT STONE
J		<b>MATERIAL:</b> STONE VENEER - PROVIA PRECISION FIT STONE
K		<b>MATERIAL:</b> WOOD TRIM <b>COLOR:</b> SHERWIN WILLIAMS CYBERSPACE (SW7076)
L		<b>MATERIAL:</b> BAHAMA SHUTTER <b>COLOR:</b> SHERWIN WILLIAMS PURE WHITE (SW7005)
M		<b>MATERIAL:</b> BAHAMA SHUTTER <b>COLOR:</b> SHERWIN WILLIAMS DENIM (SW6523)
	<b>NOTE:</b>	WINDOW FRAME AND RAILINGS COLOR AS SHOWN (WHITE)

**SCOTT + CORMIA**

ARCHITECTURE + INTERIORS

Scott + Cormia Architecture and Interiors, LLC

429 S. Keller Road, Suite 200  
Orlando, Florida 32810

t. 407-660-2766 AA26002980  
f. 407-875-3276 www.scottcormia.com

© copyright 2020 All Rights Reserved

project

**PAC - MALLORY SQUARE 2**  
ACCESSORY BUILDINGS

**NARCOOSSEE ROAD**  
**ORLANDO, FL**

seal

To the best of the architect's or engineer's knowledge, the plans and specifications comply with the applicable minimum building codes and the applicable fire-safety standards as determined by the local authority.

**submissions**

#	DATE	DESCRIPTION

**drawing info**

PROJECT # : 20101  
DRAWN BY : AG, VP, ES  
CHECKED BY : BH

**sheet number**

10-CAR GARAGE W/ACCESSIBLE BAY ELEVATIONS

**Z402**