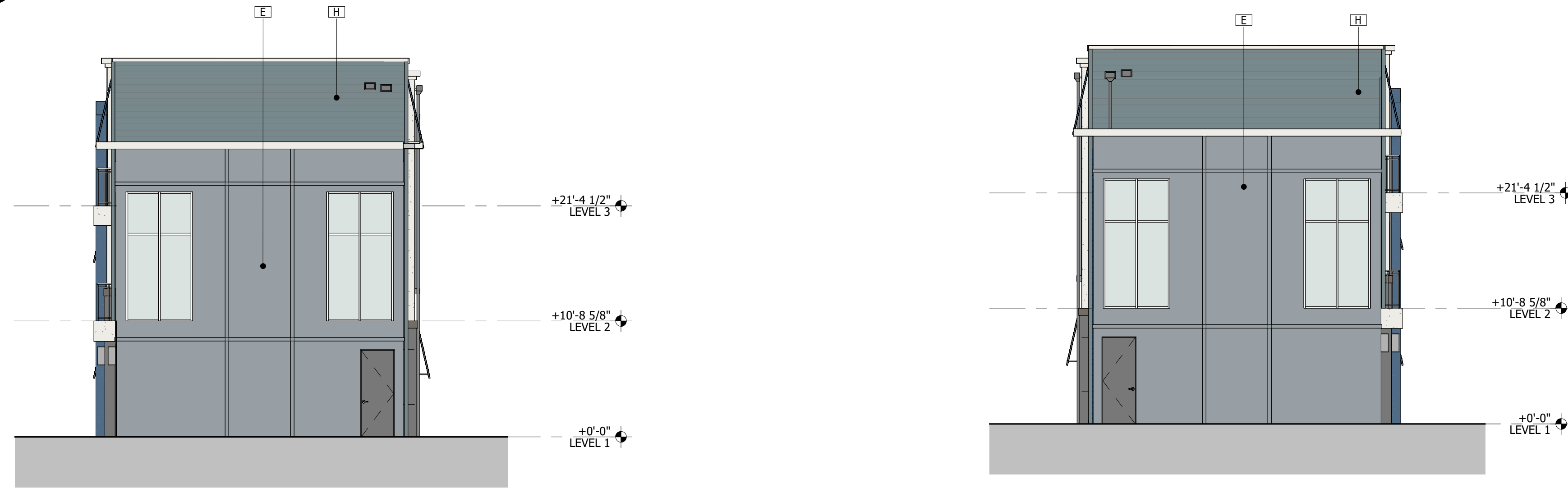


Written dimensions on these drawings shall have precedence over scaled dimensions. Contractor shall verify and be responsible for all dimensions and conditions on the job. Scott + Cormia Architecture and Interiors, LLC. must be notified immediately in writing of any variation from the dimensions and conditions shown on these drawings. Field verify all conditions prior to laying out or fabricating associated work. Bring to the architect's attention any deviation from designed conditions and field conditions prior to ordering materials and installing work, and cooperate with architect to modify such conditions at no additional cost to the owner, architect or architect's consultants. Shop details must be submitted to the architect's office and reviewed by the architect prior to ordering materials, fabrication and delivery to the job site. The contractor agrees to indemnify and hold the architect and interior finish subcontractors harmless from and against all claims, damages, losses and expenses, including reasonable attorneys' fees, that may be incurred by the architect or interior finish subcontractors, arising out of or from the performance or non-performance of the contractor's obligations under the contract documents. The contractor shall hold Scott + Cormia Architecture and Interiors, LLC. harmless and agree to remunerate Scott + Cormia Architecture and Interiors, LLC. for such use in an amount equal to the original fee for the original documents, plus legal fees, court costs, collection fees and other costs. 7/25/2022 11:31:20 AM



4 BLDG TYPE VIII - REAR ELEVATION
SCALE: 1/8" = 1'-0"



3 BLDG TYPE VIII - LEFT ELEVATION
SCALE: 1/8" = 1'-0"

2 BLDG TYPE VIII - RIGHT ELEVATION
SCALE: 1/8" = 1'-0"



1 BLDG TYPE VIII - FRONT ELEVATION
SCALE: 1/8" = 1'-0"

FINISH LEGEND	
A	MATERIAL: STUCCO SYSTEM SMOOTH FINISH COLOR: SHERWIN WILLIAMS PURE WHITE (SW7005)
B	MATERIAL: STUCCO SYSTEM SMOOTH FINISH COLOR: SHERWIN WILLIAMS DENIM (SW6523)
C	MATERIAL: STUCCO SYSTEM SMOOTH FINISH COLOR: SHERWIN WILLIAMS LET IT RAIN (SW9152)
D	MATERIAL: FIBER CEMENT FLAT PANEL & TRIM COLOR: SHERWIN WILLIAMS PURE WHITE (SW7005)
E	MATERIAL: FIBER CEMENT FLAT PANEL & TRIM COLOR: SHERWIN WILLIAMS LET IT RAIN (SW9152)
F	MATERIAL: FIBER CEMENT LAP SIDING 7" EXPOSURE COLOR: SHERWIN WILLIAMS LET IT RAIN(SW9152)
G	MATERIAL: FIBER CEMENT LAP SIDING 7" EXPOSURE COLOR: SHERWIN WILLIAMS DENIM (SW6523)
H	MATERIAL: FIBER CEMENT LAP SIDING 7" EXPOSURE COLOR: SHERWIN WILLIAMS DUTCH TILE BLUE (SW0031)
I	MATERIAL: STONE VENEER - PROVIA PRECISION FIT STONE
J	MATERIAL: STONE VENEER - PROVIA PRECISION FIT STONE
K	MATERIAL: WOOD TRIM COLOR: SHERWIN WILLIAMS CYBERSPACE (SW7076)
L	MATERIAL: BAHAMA SHUTTER COLOR: SHERWIN WILLIAMS PURE WHITE (SW7005)
M	MATERIAL: BAHAMA SHUTTER COLOR: SHERWIN WILLIAMS DENIM (SW6523)
NOTE:	WINDOW FRAME AND RAILINGS COLOR AS SHOWN (WHITE)

SCOTT + CORMIA

ARCHITECTURE + INTERIORS

Scott + Cormia Architecture and Interiors, LLC

429 S. Keller Road, Suite 200
Orlando, Florida 32810

t. 407-660-2766
f. 407-875-3276

AA26002980
www.scottcormia.com

© copyright 2020 All Rights Reserved

project

PAC - MALLORY SQUARE 2
APARTMENTS
NARCOOSSEE ROAD
ORLANDO, FL

seal

To the best of the architect's or engineer's knowledge, the plans and specifications comply with the applicable minimum building codes and the applicable fire-safety standards as determined by the local authority in accordance with FBC-8 103.4.4 and Chapter 629, Florida Statutes.

submissions

#	DATE	DESCRIPTION

drawing info

PROJECT # : 22062

DRAWN BY :

CHECKED BY : BH

sheet number

BLDG TYPE VIII - EXTERIOR ELEVATIONS

Z311