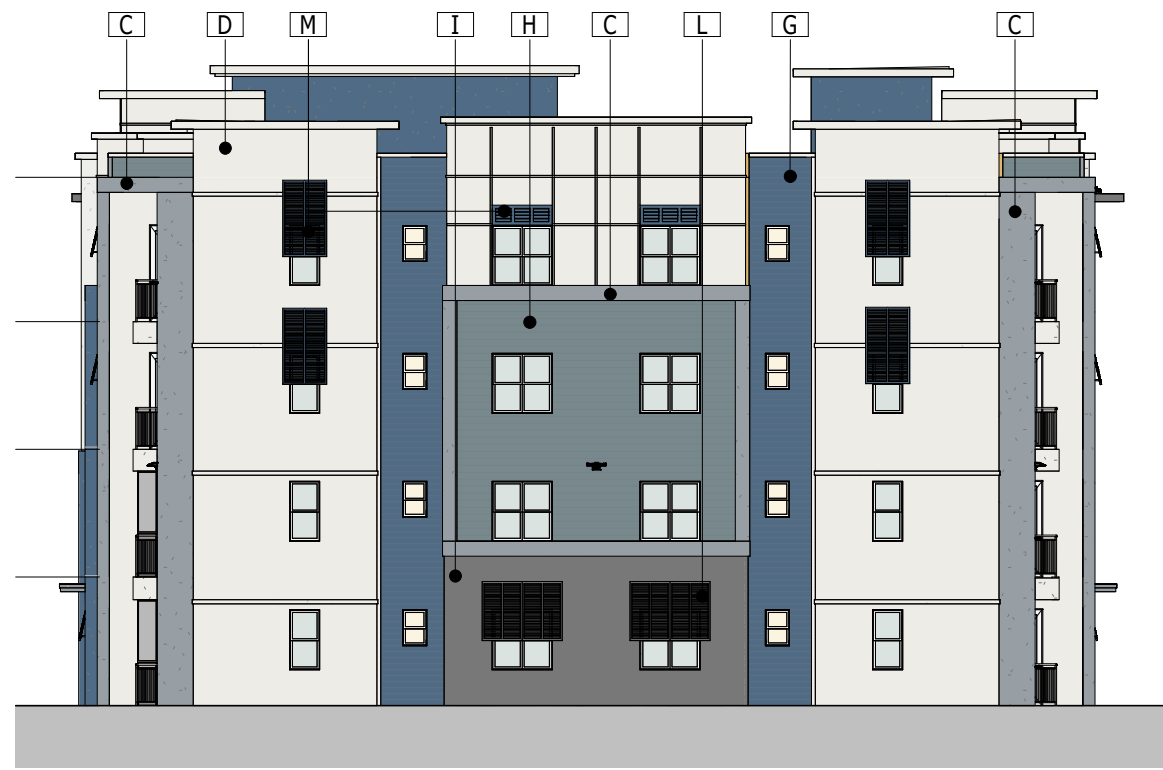


Written dimensions on these drawings shall have precedence over scaled dimensions. Contractor shall verify and be responsible for all dimensions and conditions on the job. Scott + Cormia Architecture and Interiors, LLC. must be notified immediately in writing of any variation from the dimensions and conditions shown on these drawings. Field verify all conditions prior to laying out or fabricating associated work. Bring to the architect's attention any deviation from designed conditions and field conditions prior to ordering materials and installing work, and cooperate with architect to modify such conditions at no additional cost to the owner, architect or architect's consultants. Shop details must be submitted to the architect's office and reviewed by the architect prior to ordering materials, fabrication and delivery to the job site. The architect reserves its common law copyright and other property rights in these drawings. No part of these drawings shall be reproduced, stored in a retrieval system, or transmitted in any form or by any means, electronic, mechanical, photocopying, recording, or by any information storage and retrieval system, without the prior written permission of Scott + Cormia Architecture and Interiors, LLC. The architect shall hold Scott + Cormia Architecture and Interiors, LLC. harmless and agrees to remunerate Scott + Cormia Architecture and Interiors, LLC. for such use in an amount equal to the original fee for the original documents, plus legal fees, court costs, collection fees and other costs.

7/25/2022 11:08:14 AM



4 BLDG TYPE I - REAR ELEVATION
SCALE: 1/16" = 1'-0"



3 BLDG TYPE I - LEFT ELEVATION
SCALE: 1/16" = 1'-0"



2 BLDG TYPE I - RIGHT ELEVATION
SCALE: 1/16" = 1'-0"



1 BLDG TYPE I - FRONT ELEVATION
SCALE: 1/16" = 1'-0"

FINISH LEGEND		
A		MATERIAL: STUCCO SYSTEM SMOOTH FINISH COLOR: SHERWIN WILLIAMS PURE WHITE (SW7005)
B		MATERIAL: STUCCO SYSTEM SMOOTH FINISH COLOR: SHERWIN WILLIAMS DENIM (SW6523)
C		MATERIAL: STUCCO SYSTEM SMOOTH FINISH COLOR: SHERWIN WILLIAMS LET IT RAIN (SW9152)
D		MATERIAL: FIBER CEMENT FLAT PANEL & TRIM COLOR: SHERWIN WILLIAMS PURE WHITE (SW7005)
E		MATERIAL: FIBER CEMENT FLAT PANEL & TRIM COLOR: SHERWIN WILLIAMS LET IT RAIN (SW9152)
F		MATERIAL: FIBER CEMENT LAP SIDING 7" EXPOSURE COLOR: SHERWIN WILLIAMS LET IT RAIN(SW9152)
G		MATERIAL: FIBER CEMENT LAP SIDING 7" EXPOSURE COLOR: SHERWIN WILLIAMS DENIM (SW6523)
H		MATERIAL: FIBER CEMENT LAP SIDING 7" EXPOSURE COLOR: SHERWIN WILLIAMS DUTCH TILE BLUE (SW0031)
I		MATERIAL: STONE VENEER - PROVIA PRECISION FIT STONE
J		MATERIAL: STONE VENEER - PROVIA PRECISION FIT STONE
K		MATERIAL: WOOD TRIM COLOR: SHERWIN WILLIAMS CYBERSPACE (SW7076)
L		MATERIAL: BAHAMA SHUTTER COLOR: SHERWIN WILLIAMS PURE WHITE (SW7005)
M		MATERIAL: BAHAMA SHUTTER COLOR: SHERWIN WILLIAMS DENIM (SW6523)
NOTE:		WINDOW FRAME AND RAILINGS COLOR AS SHOWN (WHITE)

SCOTT + CORMIA

ARCHITECTURE + INTERIORS

Scott + Cormia Architecture and Interiors, LLC

429 S. Keller Road, Suite 200
Orlando, Florida 32810

t. 407-660-2766
f. 407-875-3276

AA26002980
www.scottcormia.com

© copyright 2020
All Rights Reserved

project

PAC - MALLORY SQUARE 2
APARTMENTS

NARCOOSSEE ROAD
ORLANDO, FL

seal

To the best of the architect's or engineer's knowledge, the plans and specifications comply with the applicable minimum building codes and the applicable fire-safety standards as determined by the local authority in accordance with FBC-8 110.8.4.4 and chapter 629, Florida Statutes.

submissions		
#	DATE	DESCRIPTION

drawing info	
PROJECT # :	22062
DRAWN BY :	
CHECKED BY :	BH
sheet number	
BLDG TYPE I - EXTERIOR ELEVATIONS	

Z301