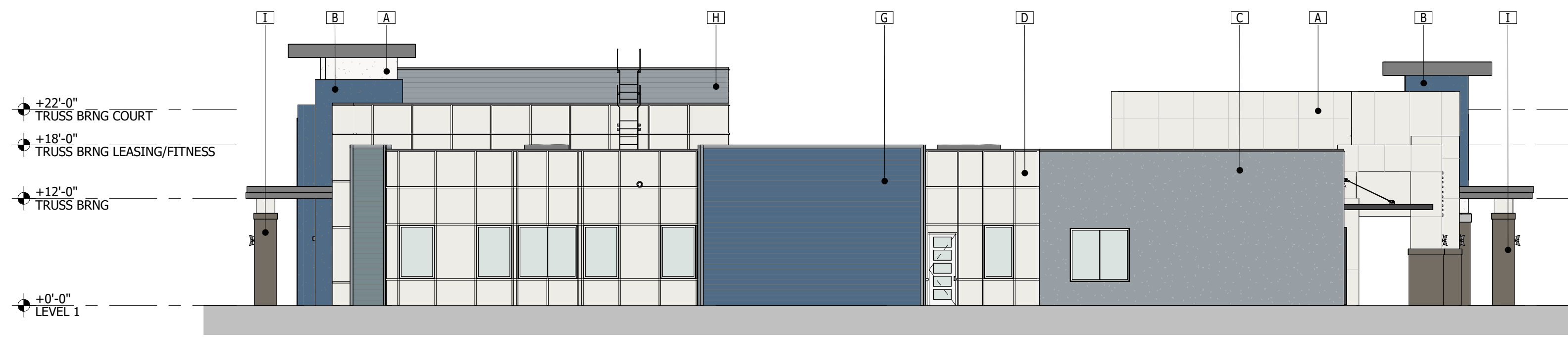
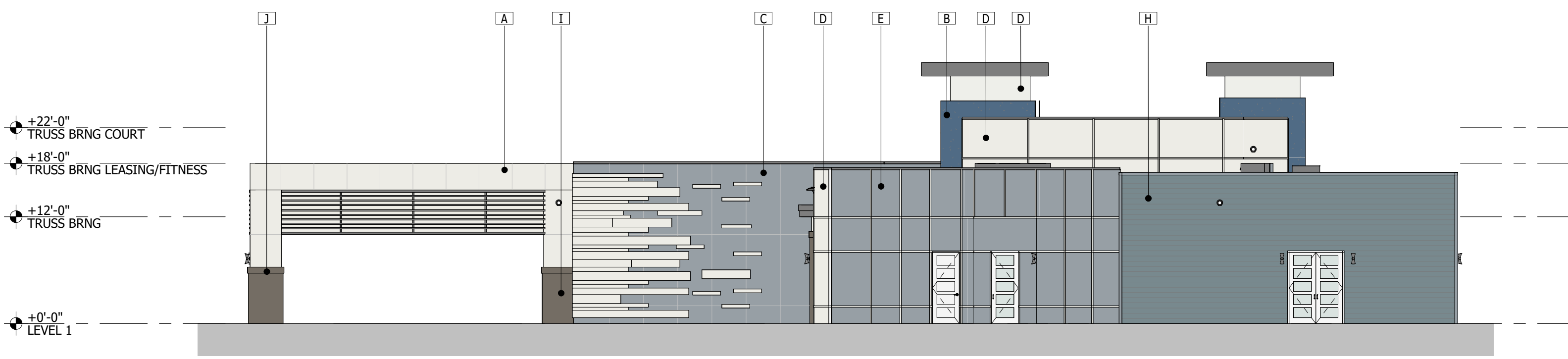


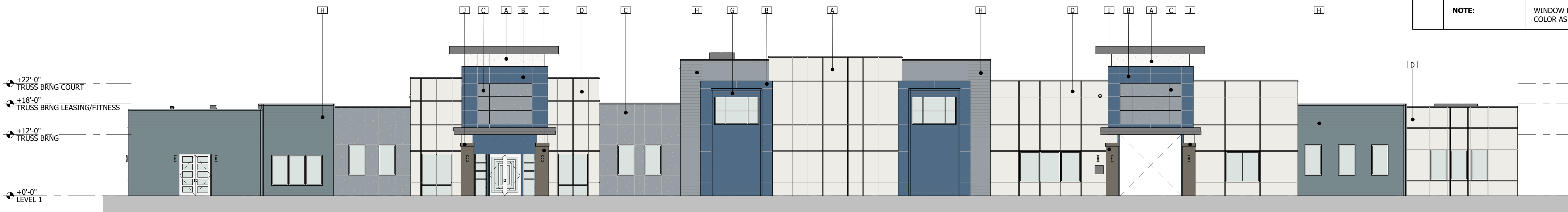
Written dimensions on these drawings shall have precedence over scaled dimensions. Contractor shall verify and be responsible for all dimensions and conditions on the job. Scott + Cormia Architecture and Interiors, LLC must be notified immediately in writing of any variation from the dimensions and conditions shown on these drawings. Field verify all conditions prior to laying out or fabricating associated work. Bring to the architect's attention any deviation from designed conditions and field conditions prior to ordering materials and installing work, and cooperate with architect to modify such conditions at no additional cost to the owner, architect or architect's consultants. Shop details must be submitted to the architect's office and reviewed by the architect prior to ordering materials, fabrication and delivery to the job site. These conditions apply to the architect and contractor under the same contract agreement between the architect and contractor. Scott + Cormia Architecture and Interiors, LLC reserves its common law copyright and other proprietary rights in these drawings. No part of these drawings shall be reproduced, stored in a retrieval system, or transmitted in any form or by any means, electronic, mechanical, photocopying, recording, or by any information storage and retrieval system, without the prior written permission of Scott + Cormia Architecture and Interiors, LLC. The work of unauthorized use of these documents by a third party shall hold Scott + Cormia Architecture and Interiors, LLC harmless and agree to remunerate Scott + Cormia Architecture and Interiors, LLC for such use in an amount equal to the original fee for the original documents, plus legal fees, court costs, collection fees and other costs. 7/25/2022 11:20:45 AM



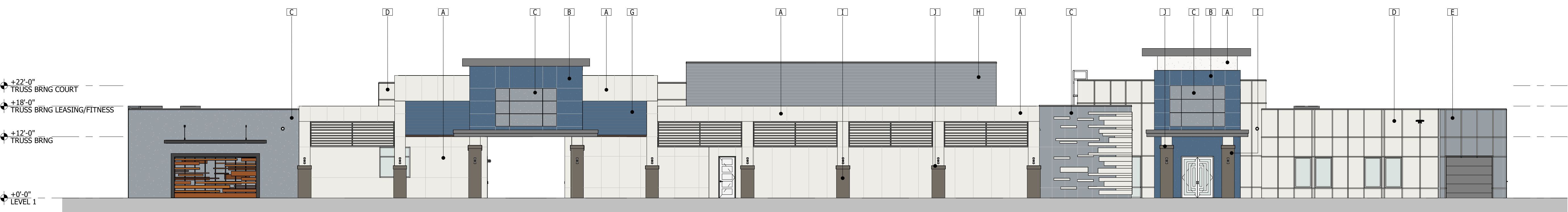
4 EXTERIOR ELEVATION - SOUTH  
SCALE: 3/32" = 1'-0"



3 EXTERIOR ELEVATION - NORTH  
SCALE: 3/32" = 1'-0"



2 EXTERIOR ELEVATION - EAST  
SCALE: 3/32" = 1'-0"



1 EXTERIOR ELEVATION - WEST  
SCALE: 3/32" = 1'-0"

FINISH LEGEND		
A		<b>MATERIAL:</b> STUCCO SYSTEM SMOOTH FINISH <b>COLOR:</b> SHERWIN WILLIAMS PURE WHITE (SW7005)
B		<b>MATERIAL:</b> STUCCO SYSTEM SMOOTH FINISH <b>COLOR:</b> SHERWIN WILLIAMS DENIM (SW6523)
C		<b>MATERIAL:</b> STUCCO SYSTEM SMOOTH FINISH <b>COLOR:</b> SHERWIN WILLIAMS LET IT RAIN (SW9152)
D		<b>MATERIAL:</b> FIBER CEMENT FLAT PANEL & TRIM <b>COLOR:</b> SHERWIN WILLIAMS PURE WHITE (SW7005)
E		<b>MATERIAL:</b> FIBER CEMENT FLAT PANEL & TRIM <b>COLOR:</b> SHERWIN WILLIAMS LET IT RAIN (SW9152)
F		<b>MATERIAL:</b> FIBER CEMENT LAP SIDING 7" EXPOSURE <b>COLOR:</b> SHERWIN WILLIAMS LET IT RAIN(SW9152)
G		<b>MATERIAL:</b> FIBER CEMENT LAP SIDING 7" EXPOSURE <b>COLOR:</b> SHERWIN WILLIAMS DENIM (SW6523)
H		<b>MATERIAL:</b> FIBER CEMENT LAP SIDING 7" EXPOSURE <b>COLOR:</b> SHERWIN WILLIAMS DUTCH TILE BLUE (SW0031)
I		<b>MATERIAL:</b> STONE VENEER - PROVIA PRECISION FIT STONE
J		<b>MATERIAL:</b> STONE VENEER - PROVIA PRECISION FIT STONE
K		<b>MATERIAL:</b> WOOD TRIM <b>COLOR:</b> SHERWIN WILLIAMS CYBERSPACE (SW7076)
L		<b>MATERIAL:</b> BAHAMA SHUTTER <b>COLOR:</b> SHERWIN WILLIAMS PURE WHITE (SW7005)
M		<b>MATERIAL:</b> BAHAMA SHUTTER <b>COLOR:</b> SHERWIN WILLIAMS DENIM (SW6523)
	<b>NOTE:</b>	WINDOW FRAME AND RAILINGS COLOR AS SHOWN (WHITE)

SCOTT + CORMIA

ARCHITECTURE + INTERIORS

Scott + Cormia Architecture and Interiors, LLC

429 S. Keller Road, Suite 200  
Orlando, Florida 32810

t. 407-660-2766 AA26002980  
f. 407-875-3276 www.scottcormia.com

© copyright 2020 All Rights Reserved

project

PAC - MALLORY SQUARE 2  
CLUBHOUSE

NARCOOSSEE ROAD  
ORLANDO, FL

seal

To the best of the architect's or engineer's knowledge, the plans and specifications comply with the applicable minimum building codes and the applicable fire-safety standards as determined by the local authority.

submissions

#	DATE	DESCRIPTION

drawing info

PROJECT #: 22062  
DRAWN BY: ES  
CHECKED BY: BH

sheet number  
EXTERIOR ELEVATIONS

Z201